

Botswana Safari Week



Your professional partner for perfectly organised travel arrangements to Southern and Eastern Africa as well as to selected islands in the Indian Ocean



Travel more conscious. Travel with Bush Legends.

With this journey you significantly support the conservation and community projects of
of Ker & Downey Botswana.

www.kerdowneybotswana.com/ethos

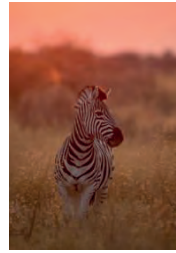
Botswana Safari Week

Selected camps
Fly-In Safari with professional guides from the respective camps

Central Kalahari Game Reserve – Okavango Delta

Day 01: Maun – Central Kalahari Game Reserve

On your arrival at Maun Airport, you are warmly welcomed. Your onward charter flight of about 40 minutes takes you right to the airstrip of Dinaka Camp. The camp is situated within a private concession of about 40,000 ha in size on the northern edge of the Central Kalahari Game Reserve. The name 'Kalahari' comes from the Tswana word 'Kgala' and means 'great thirst'. This vast and truly impressive desert landscape is covered with red sand, and you can discover the beauty of this in the next days with the exclusivity of a private reserve. Later in the afternoon, you may like to join in for your first safari activity. Or alternatively, you may prefer to arrive first, sit back and relax on the terrace enjoying unique views during sunset. Staying at Dinaka Camp offers a wonderful contrast to the Okavango Delta experience. Enjoy the heartfelt ambiance in camp and the wonderful hospitality of the team during a delightful dinner. Dinaka Camp D

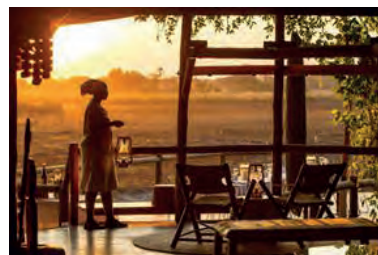


Day 02 & 03: Central Kalahari Game Reserve

Enjoy 2 full days exploring the fascinating plains of the Kalahari in Botswana together with your dedicated guide. The wildlife ranges from giraffe and various antelope species to small mammals such as honey badger, bat-eared fox and porcupine to predators such as the Kalahari lion, cheetah, leopard and brown hyena. There is further a rhino reintroduction project in this huge private concession, which allows for great chances to also watch rhino in the wilderness. Activities include professionally guided morning and afternoon game drives in an open safari vehicle. Afternoon game drives often continue into the evening. Alternatively, you may also wish to experience the surrounding nature on a guided game walk with your professional guide or during a guided walk with the local San people. The bird watching in this area is also particularly spectacular, as it is home to more than 200 different bird species. Year-round water holes result in spectacular photographic opportunities either from the hide or safari vehicle. 2x Dinaka Camp B,L,D

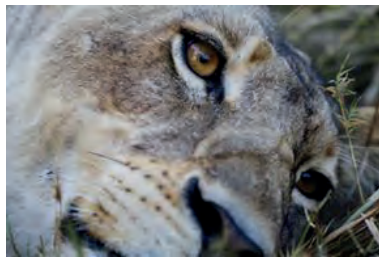
Day 04: Central Kalahari Game Reserve – Okavango Delta

Today your journey continues, and you can look forward to another great and impressive area. Your charter flight of about 1 hour takes you to the Okavango Delta. Kanana Camp is located on an island in the Xudum River in the south-western part of the Okavango Delta. It is situated in a private concession and is well known for its fantastic game viewing opportunities. Open grass plains, islands as well as channels lined with papyrus make this part of Africa so special and unique. The word 'Kanana' means 'paradise' in the Setswana language. Wildlife is in abundance with frequent predator sightings such as lion, leopard and wild dog all making Kanana their hunting grounds. Kanana Camp B,L,D



Day 05 - 07: Okavango Delta

Enjoy 3 whole days exploring this south-westerly part of the fascinating Okavango Delta during your safari activities. Whilst classic game drives in an open 4x4 safari vehicle are available and popular, this region can also be experienced on foot or gliding silently through the waterways in a traditional mokoro canoe or motorboat, naturally depending on the water level. This area offers a fascinating safari experience which draws you intimately into nature in its purest form. With some luck you even get to see impala, lechwe, hippo, crocodile or lion from camp. Kanana Camp is one of the few lucky camps in the Okavango Delta to have an exclusive heronry nearby where large numbers of migratory water birds come to have their young from July onwards. In the afternoon it is the ideal time to relax during a siesta and to enjoy the silence in wonderful nature. Dinners are served on various spots, either on the Dining Deck, privately by the swimming pool or out in the wilderness. Simply enjoy this authentic safari camp experience with all the comfort and a wonderful hospitality for your safari. 3x Kanana Camp B,L,D



Day 08: Okavango Delta – Maun

You may like to opt for a leisure morning and a cosy breakfast viewing the bush to wake up or alternatively, you may certainly still get up for a preliminary last safari activity of your choice. Later in the morning you are transferred to the nearby airstrip for your charter flight back to Maun. We gladly arrange for a possible extension if you wish, you may feel like combining this safari with the lifestyle of Cape Town and its surrounds or alternatively on the white sandy beaches of Mozambique. B

B- Breakfast / L- Lunch/ D- Dinner

Season	Rate per person sharing *considers Specials
Sample period low season 01.01.2025 – 28.02.2025	EURO 5.532*
Sample period mid season 01.03.2025 – 15.04.2025 23.04.2025 – 31.05.2025 01.11.2025 – 14.12.2025	EURO 8.024* EURO 8.024* EURO 8.024*
Sample period high season 16.04.2025 – 22.04.2025 01.06.2025 – 31.10.2025 15.12.2025 – 31.12.2025	EURO 10.181* EURO 10.181* EURO 10.181*

Rates are based on a minimum of 2 guests.
All outdoor activities are weather dependant.

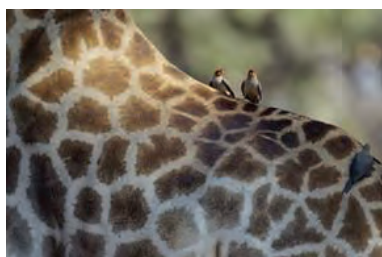
Included in costs (as per itinerary):

- All transfers, accommodation, meals as per programme
- Charter flight transfers Maun – Central Kalahari Game Reserve – Okavango Delta - Maun on a seat-in basis
- Transport in a 4x4 safari vehicle at Dinaka Camp and Kanana Camp with professional English speaking guide during the safari (other guests might also join on the same safari vehicle, usually there is a max. of 6 guests on a vehicle, exclusive use of the safari vehicle causes a supplement fee)
- 2 activities per day at Dinaka Camp and Kanana Camp (except on days of arrival/departure, where mostly only one or none activity is possible)
- Entrance fees for National Parks, Game Reserves and concession areas
- Selected drinks at Dinaka Camp and Kanana Camp (except for champagne and imported spirits)
- Laundry at Dinaka Camp and Kanana Camp

Not included in costs:

- International flights ex/to Europe
- Regional flights ex/to Maun
- Tips as well as personal expenses
- Any meals not mentioned in the programme
- Drinks, unless advised otherwise
- Any optional activities
- Any travel insurance

Rates are subject to change. We gladly assist you with any additional services you might require for your travels in Africa. In general, not suitable for people with reduced mobility. This marking serves as a guideline and cannot replace a case-by-case assessment. If you have any doubts, do not hesitate to contact us.



We thank you for your attention and look forward to being your professional partner for the organisation of your tailormade Africa journey. Travelling is not only beautiful and moving, you also move a lot with your journeys booked with us and our carefully selected partners in Africa.