

SIX SENSES
RESIDENCES

COURCHEVEL





COURCHEVEL 1850

- 1 Six Senses Alpine Suites Courchevel
- 2 Hermès
- 3 Gucci
- 4 Chanel

- 5 Ski Lift Station & Six Senses Ski Concierge
- 6 K2 Hotel
- 7 Kilimanjaro Hotel





GETTING THERE

Six Senses Residences Courchevel is located at the heart of Courchevel 1850 in the renowned three-valley ski area, the largest linked ski area in the world.

Thirty minutes from Moutiers train station with direct services by Eurostar and TGV during the ski season.

One-hour drive from Chambéry airport,
Two hours fifteen minutes from Lyon airport and
Two hours thirty minutes from Geneva airport

Helicopter transfers to Courchevel heliport are also available; 25 minutes from Chambéry, 45 minutes from Lyon and Geneva.





THE RESIDENCES

The Residences are made up of 5 blocks, A, B, C, D & E and constitute 50 apartments and a chalet. The Club Lounge is also conveniently located on the Ground floor and a Six Senses Spa on the 1st floor.

The rental units are located as follows:

B block – 3 units

C block – 5 units

D block – 1 unit

E block – 12 units

Amenities in all units include:

- Naturalmat organic mattresses
- The Organic Pharmacy bathroom amenities
- Flat-panel TV
iPad integrated music system
- Fully equipped kitchen
- Unlimited in-room wireless internet access



ACCOMMODATION –E block

Twelve apartments ranging from 710 to 1,021 square feet (66 to 95 square meters) in Block E.

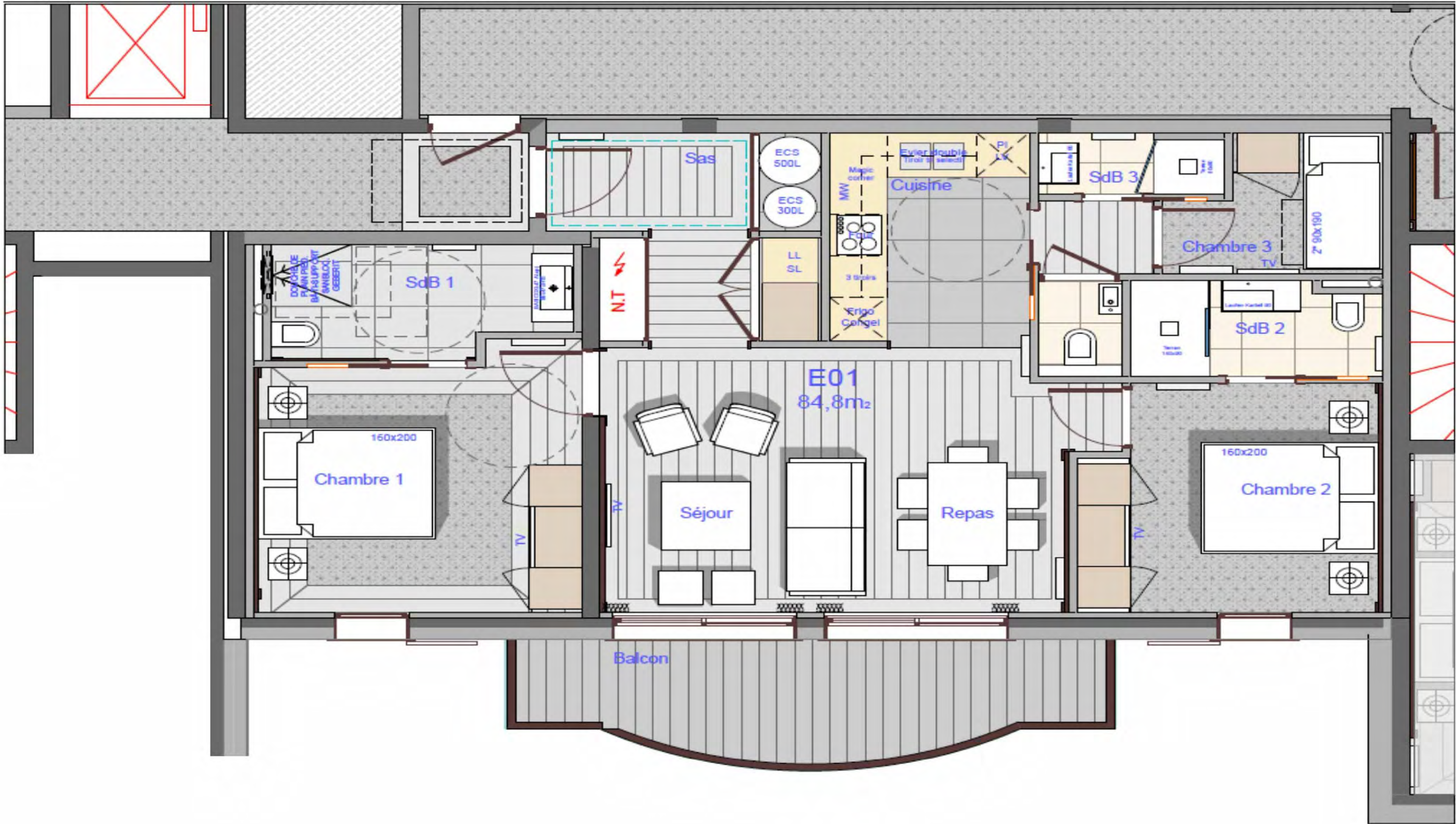
Amenities include:

- Naturalmat organic mattresses
- The Organic Pharmacy bathroom amenities
- Flat-panel TV with apple TV
iPad integrated music system
- Fully equipped kitchen
- Unlimited in-room wireless internet access

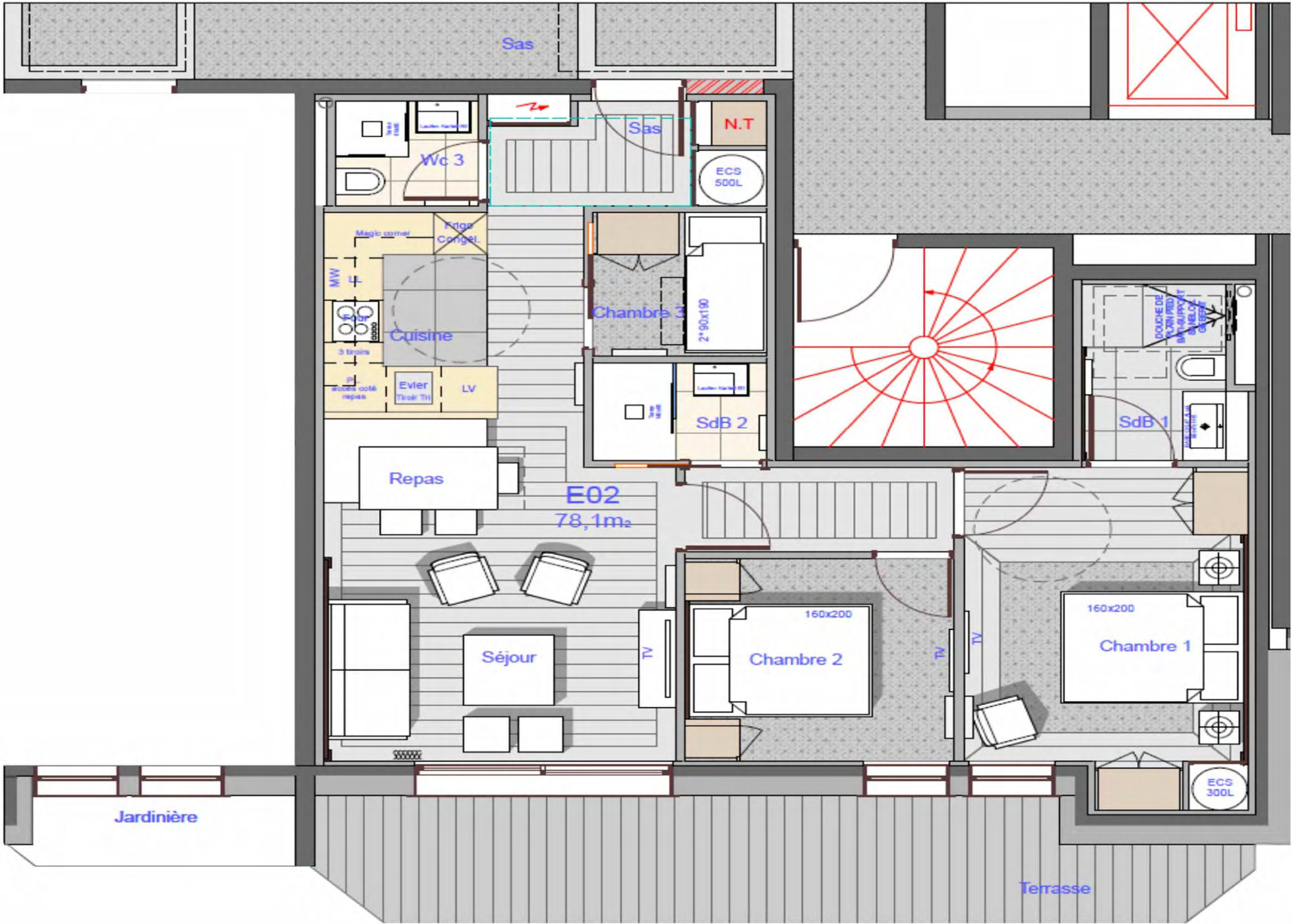




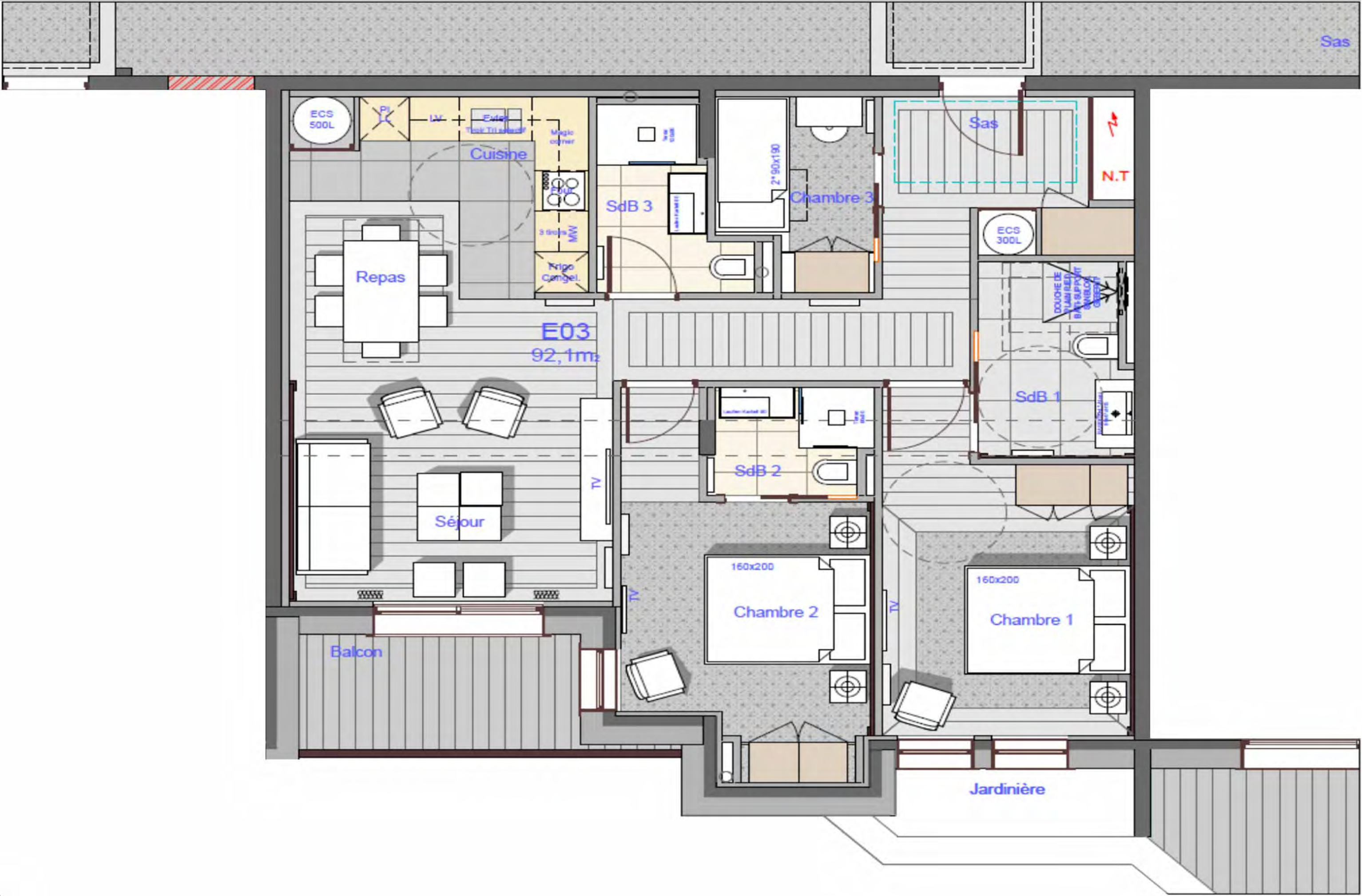
E01 – 3 Bedrooms



E02 – 3 Bedrooms



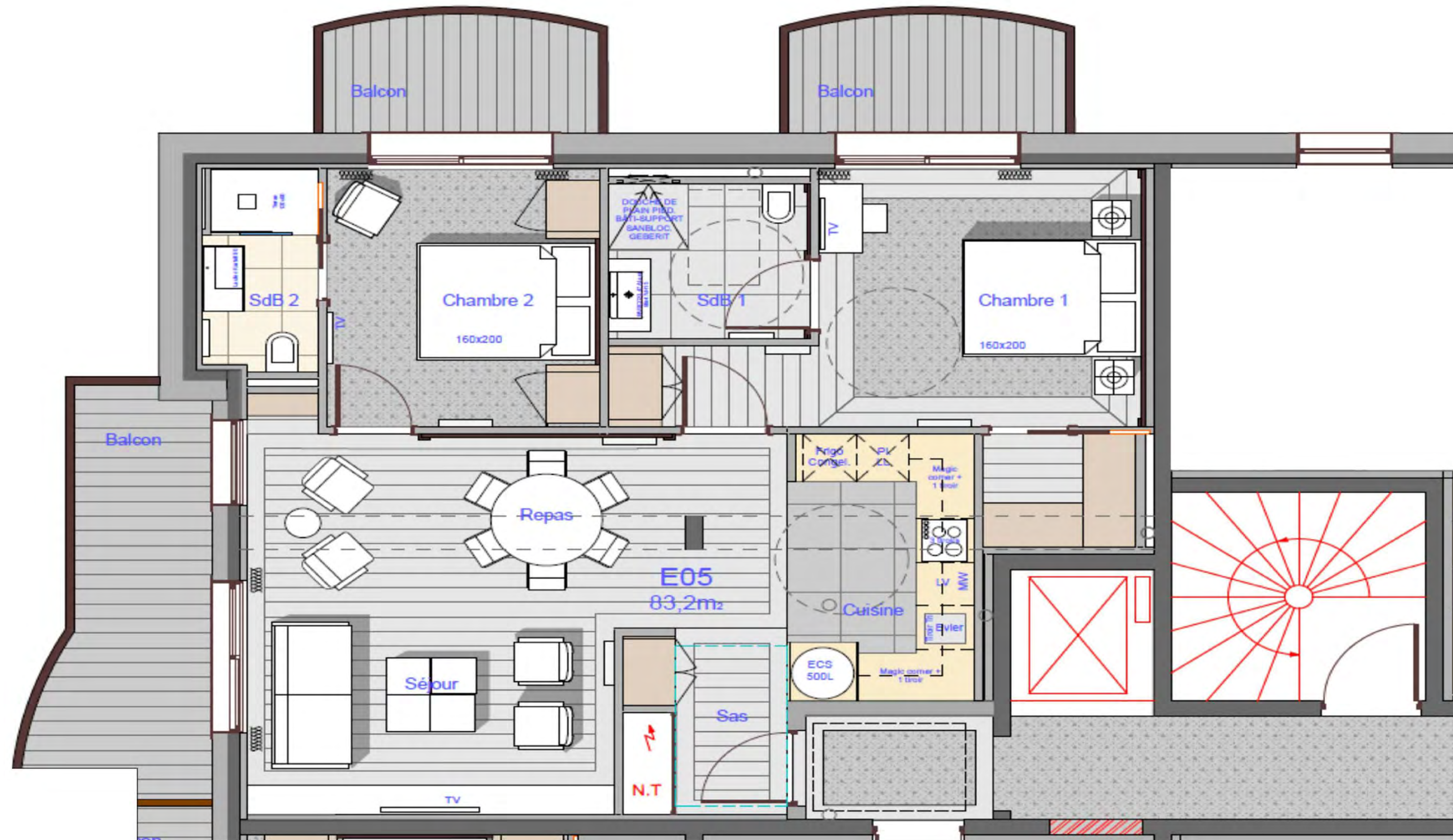
E03 – 3 Bedrooms



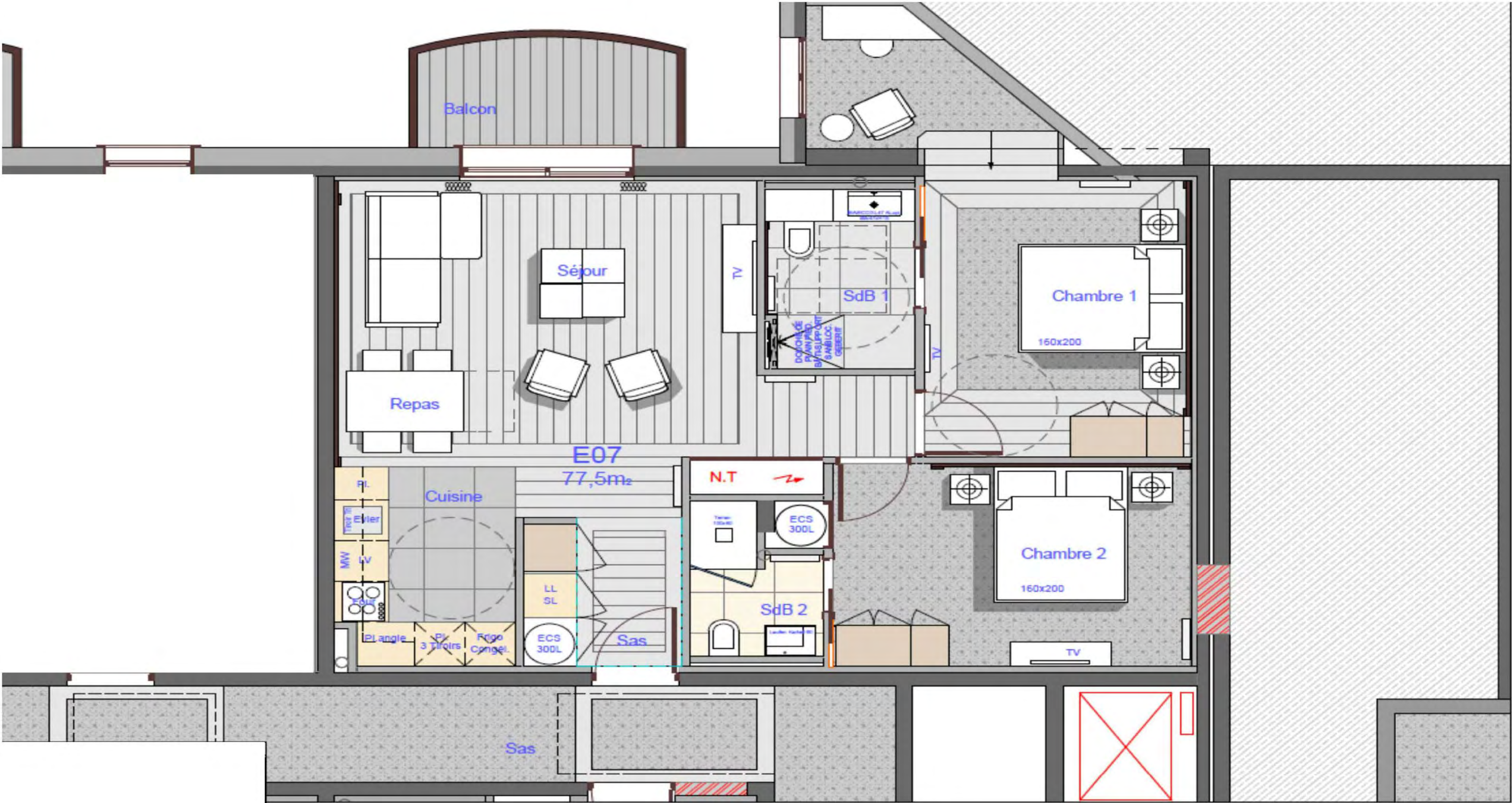
E04 – 3 Bedrooms



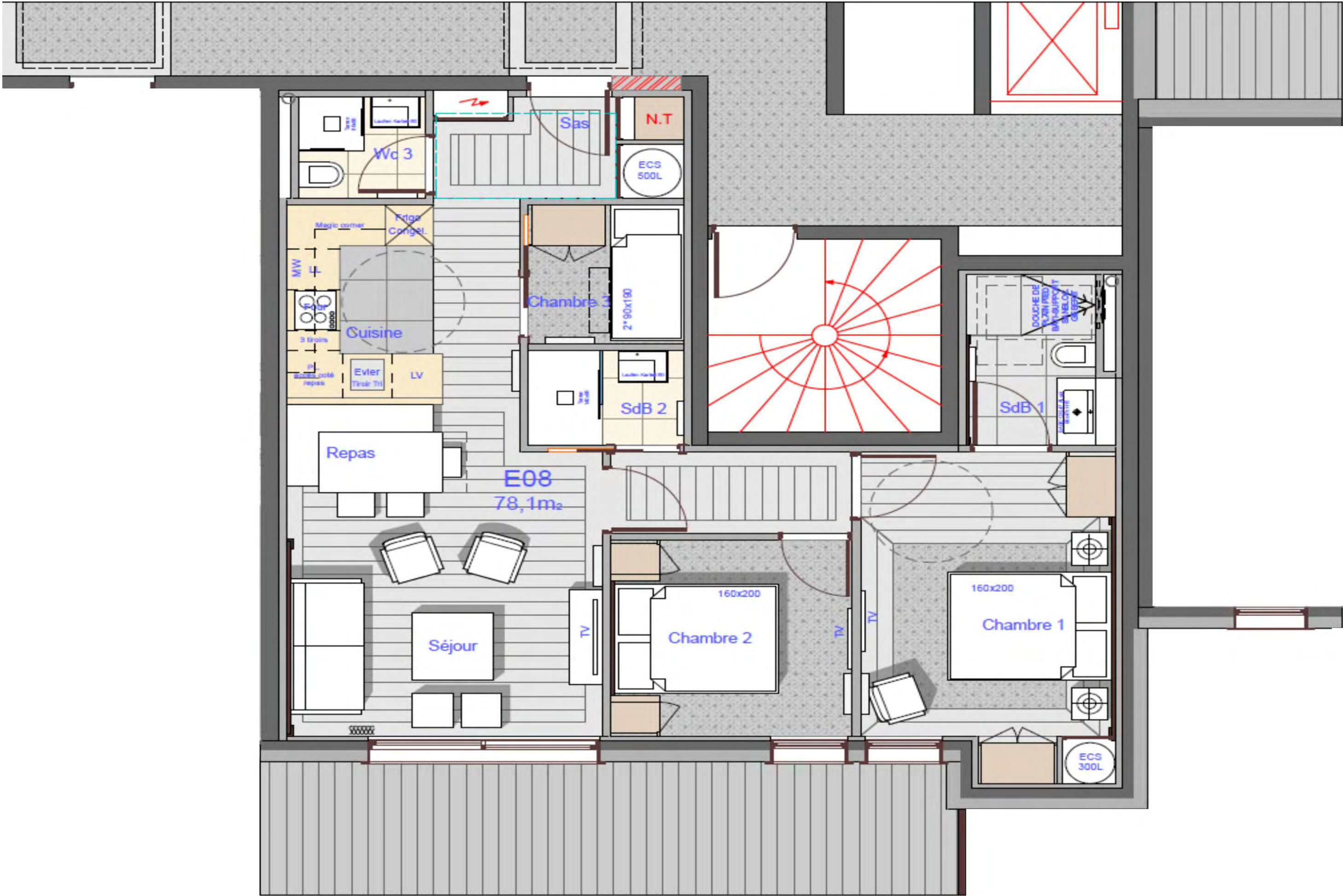
E05 – 2 Bedrooms



E07 – 2 Bedrooms



E08 – 3 Bedrooms



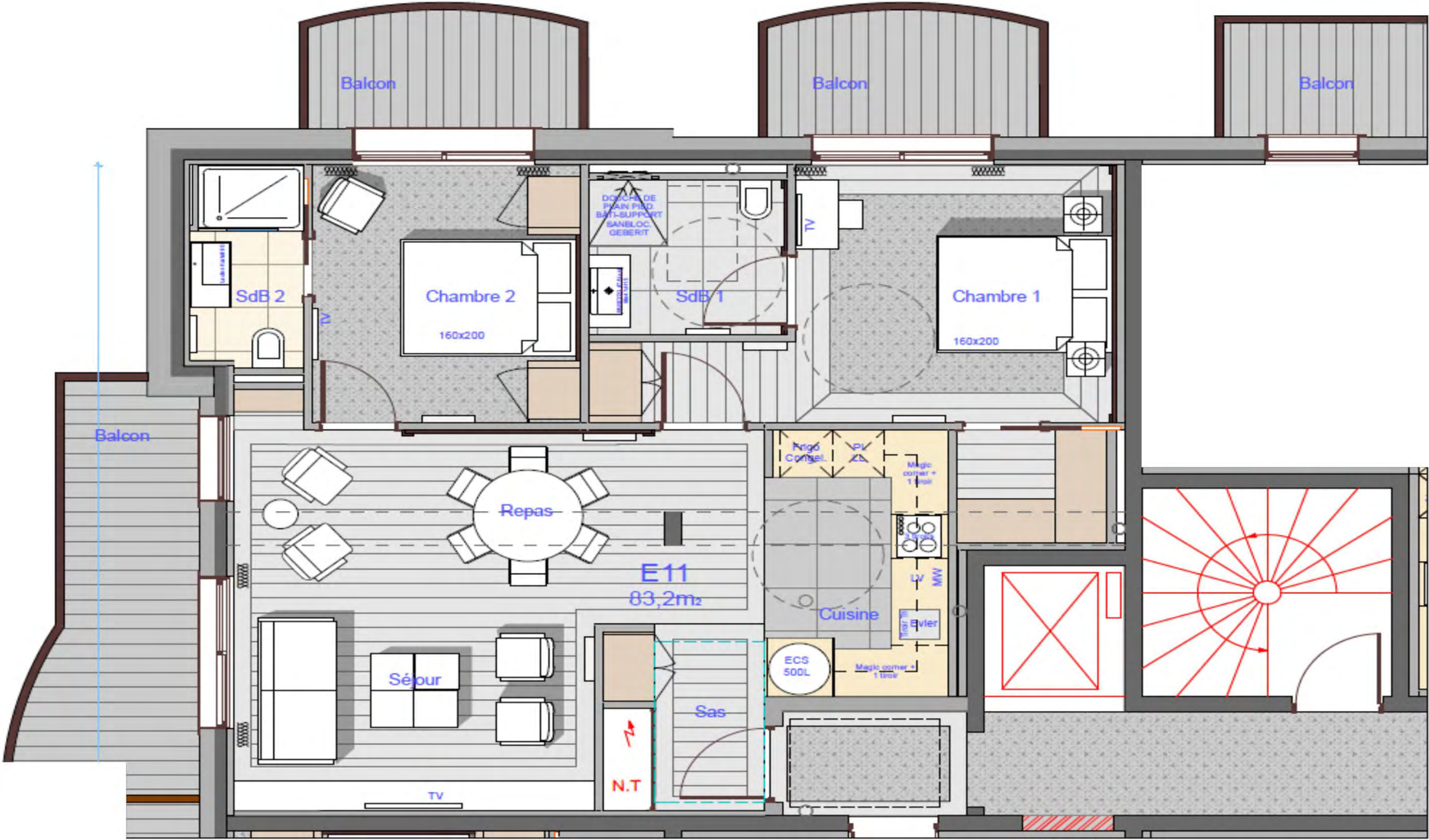
E09 – 3 Bedrooms



E10 – 3 Bedrooms



E11 – 2 Bedrooms



E12 – 2 Bedrooms



E13 – 2 Bedrooms



ACCOMMODATIONS – B block

Three apartments ranging from 936 to 1,173 square feet (87 to 109 square meters) in Block B.

Amenities include:

- Naturalmat organic mattresses
- The Organic Pharmacy bathroom amenities
- Flat-panel TV
iPad integrated music system
- Fully equipped kitchen
- Unlimited in-room wireless internet access



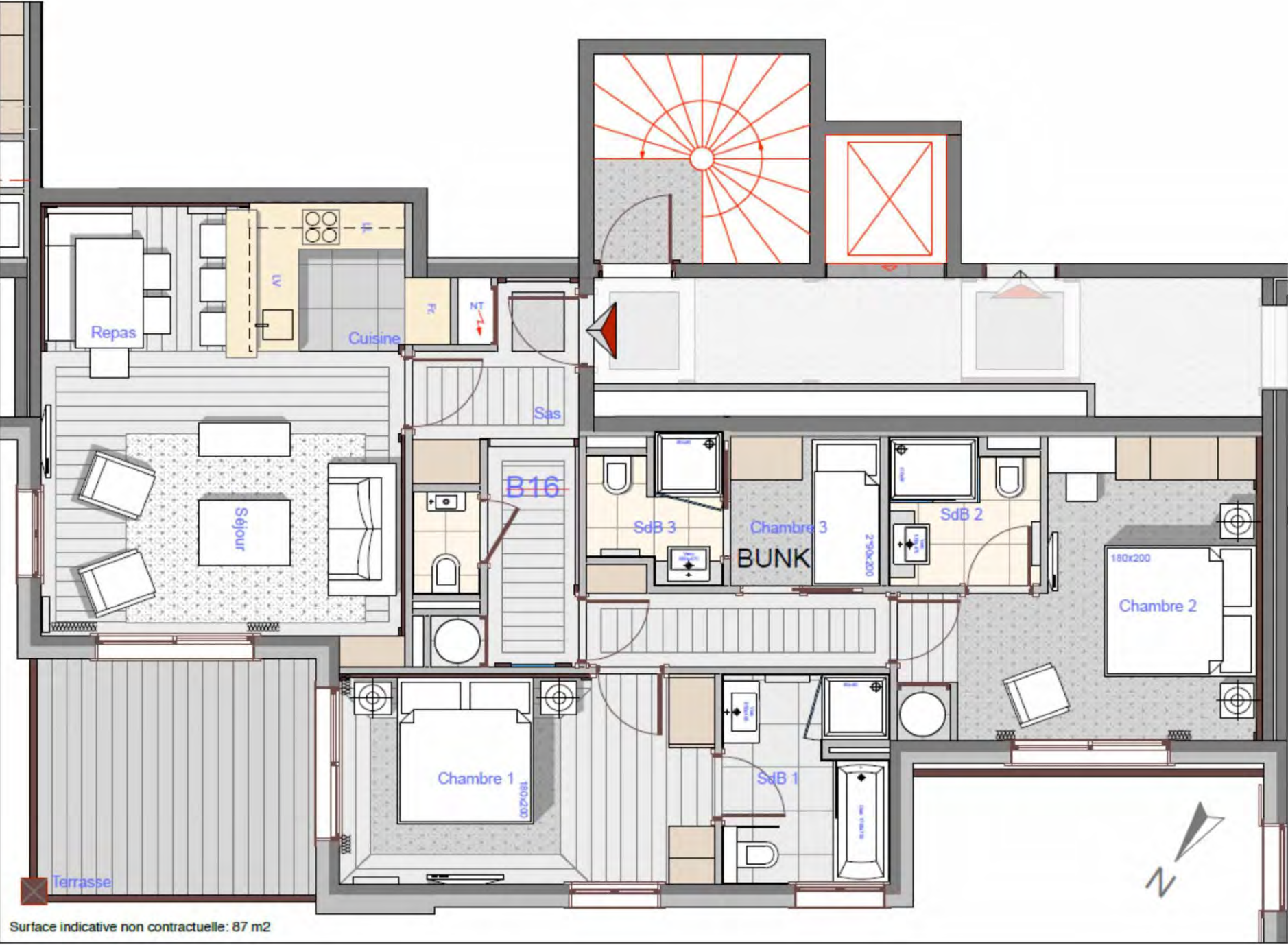
B01 – 3 Bedrooms



B08 – 3 Bedrooms



B11 – 3 Bedrooms



ACCOMMODATION – C block

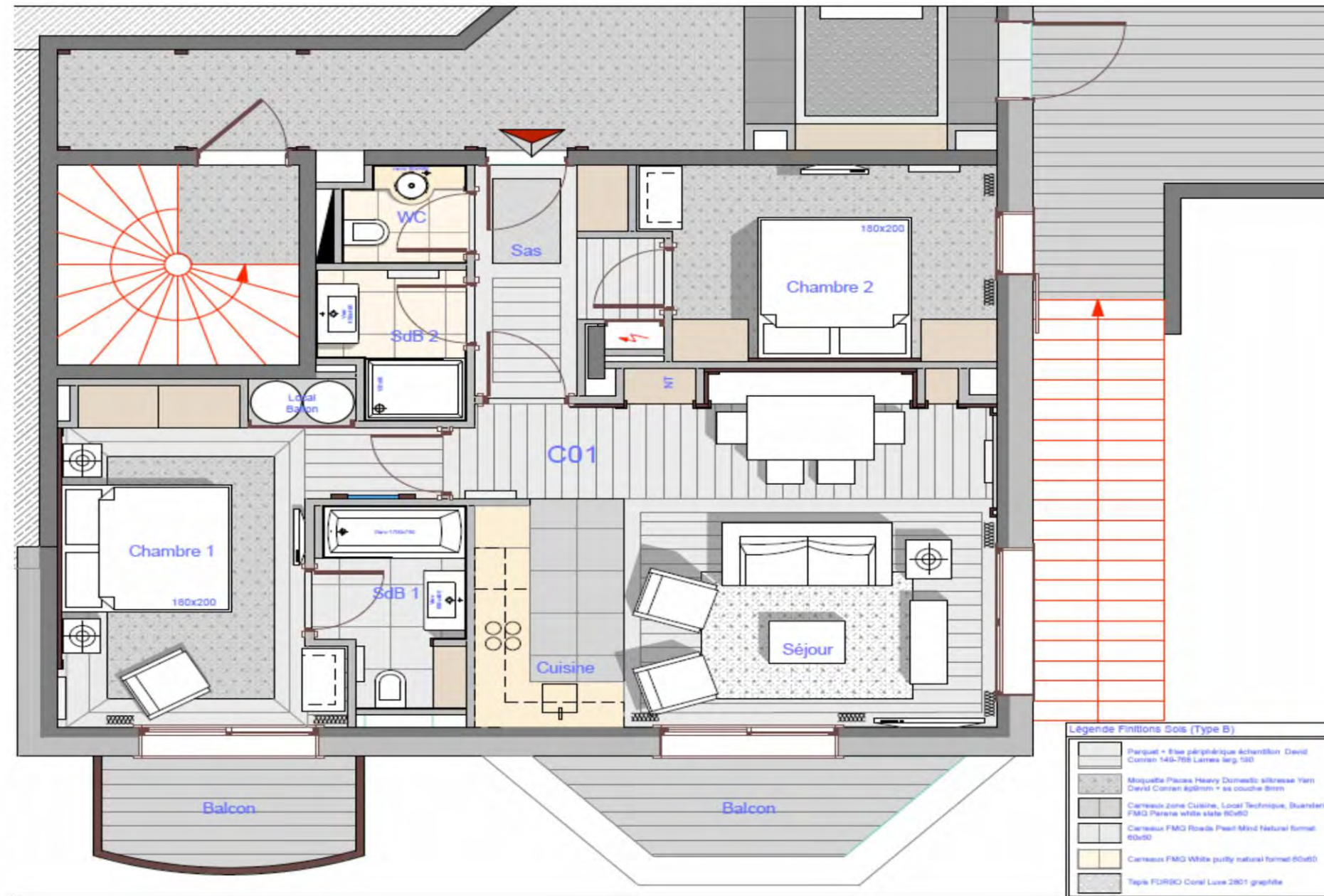
Four apartments ranging from 721 to 1,517 square feet (67 to 141 square meters) in Block C.

Amenities include:

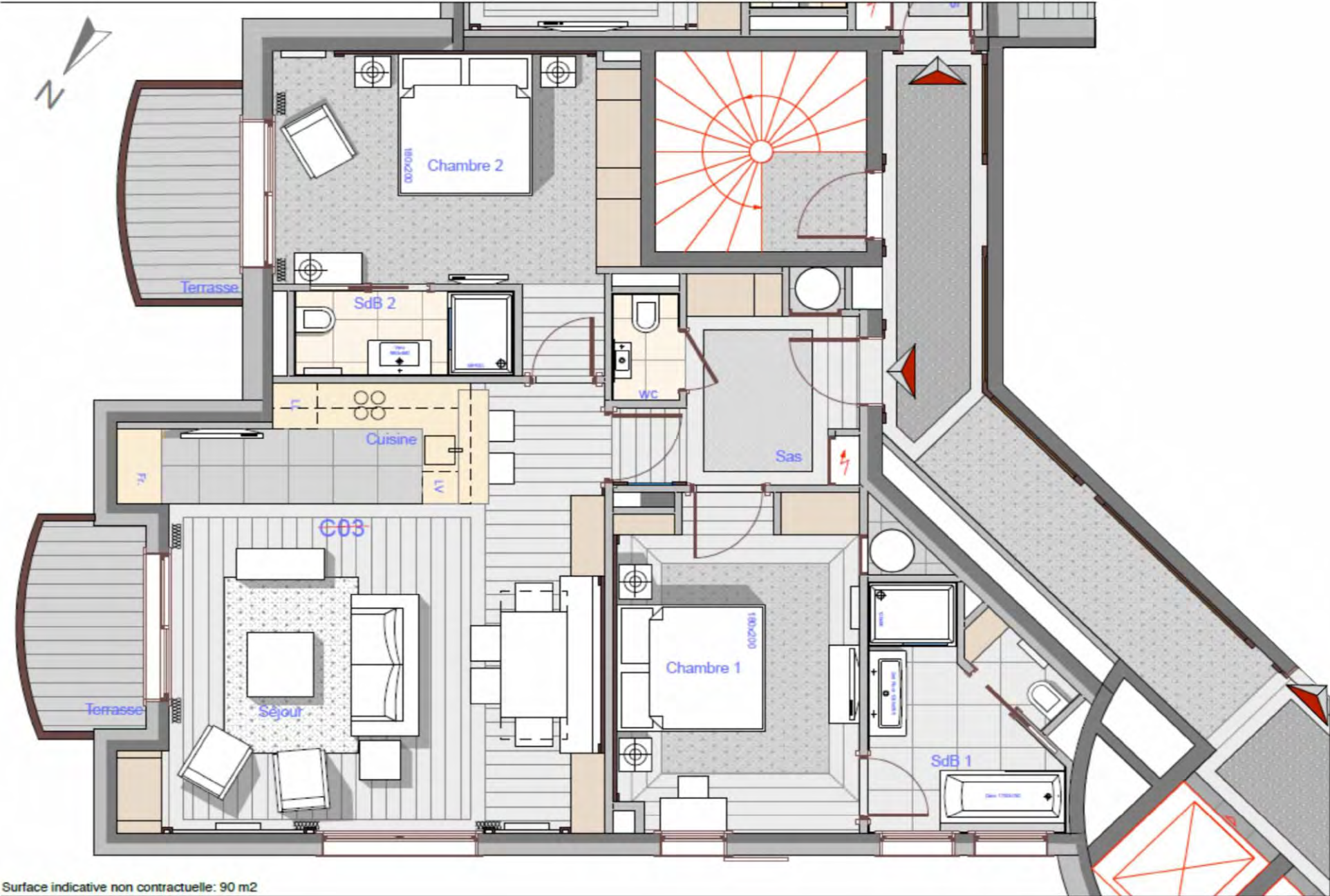
- Naturalmat organic mattresses
- The Organic Pharmacy bathroom amenities
- Flat-panel TV
iPad integrated music system
- Fully equipped kitchen
- Unlimited in-room wireless internet access



C01 - 2 Bedrooms



C02 – 2 Bedrooms



C03 – 4 Bedrooms Duplex
Level 1



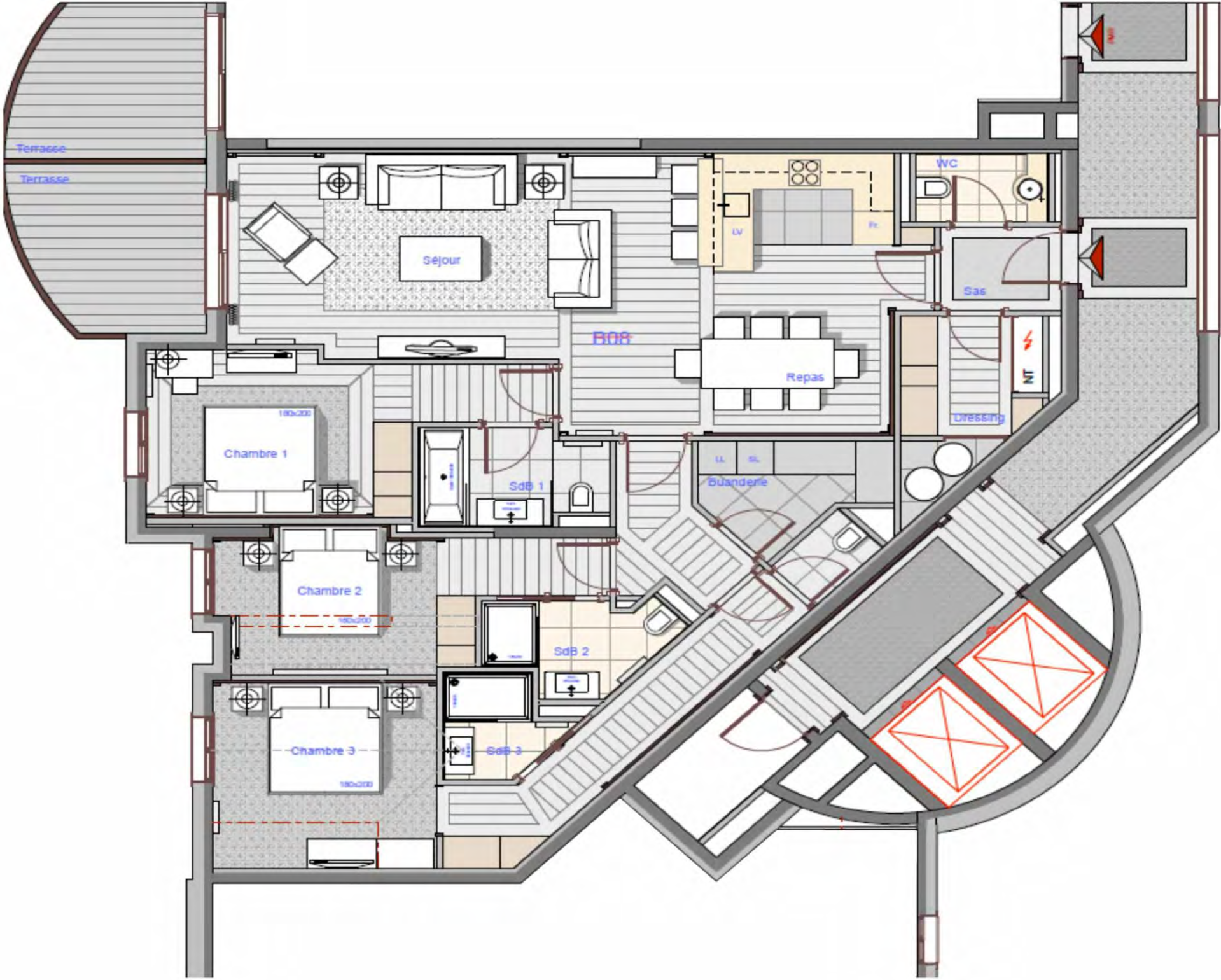
C03 – 4 Bedrooms Duplex
Level 2



C11 – 2 Bedrooms



C12 – 3 Bedrooms

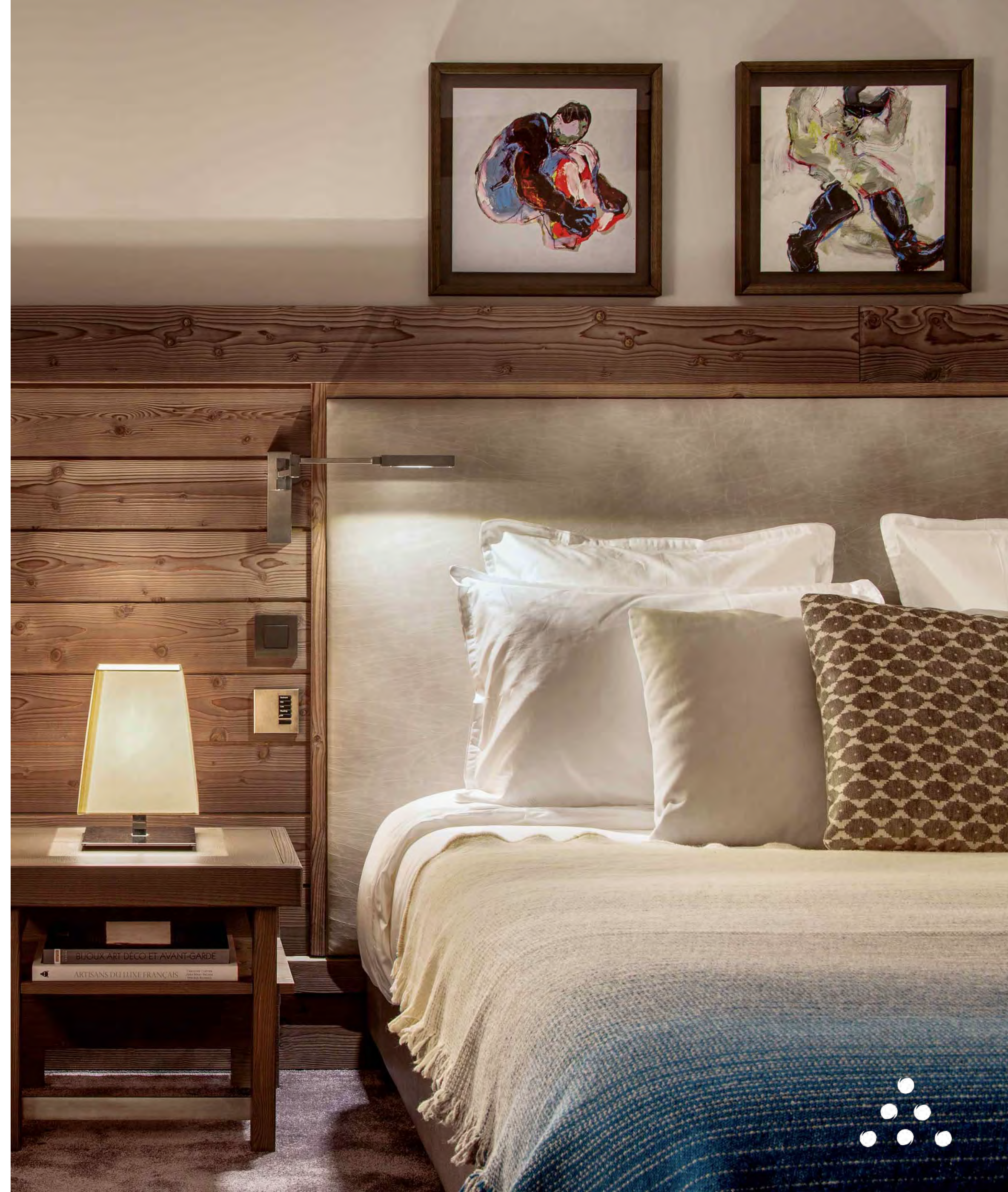


ACCOMMODATION – D block

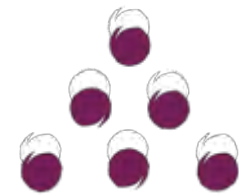
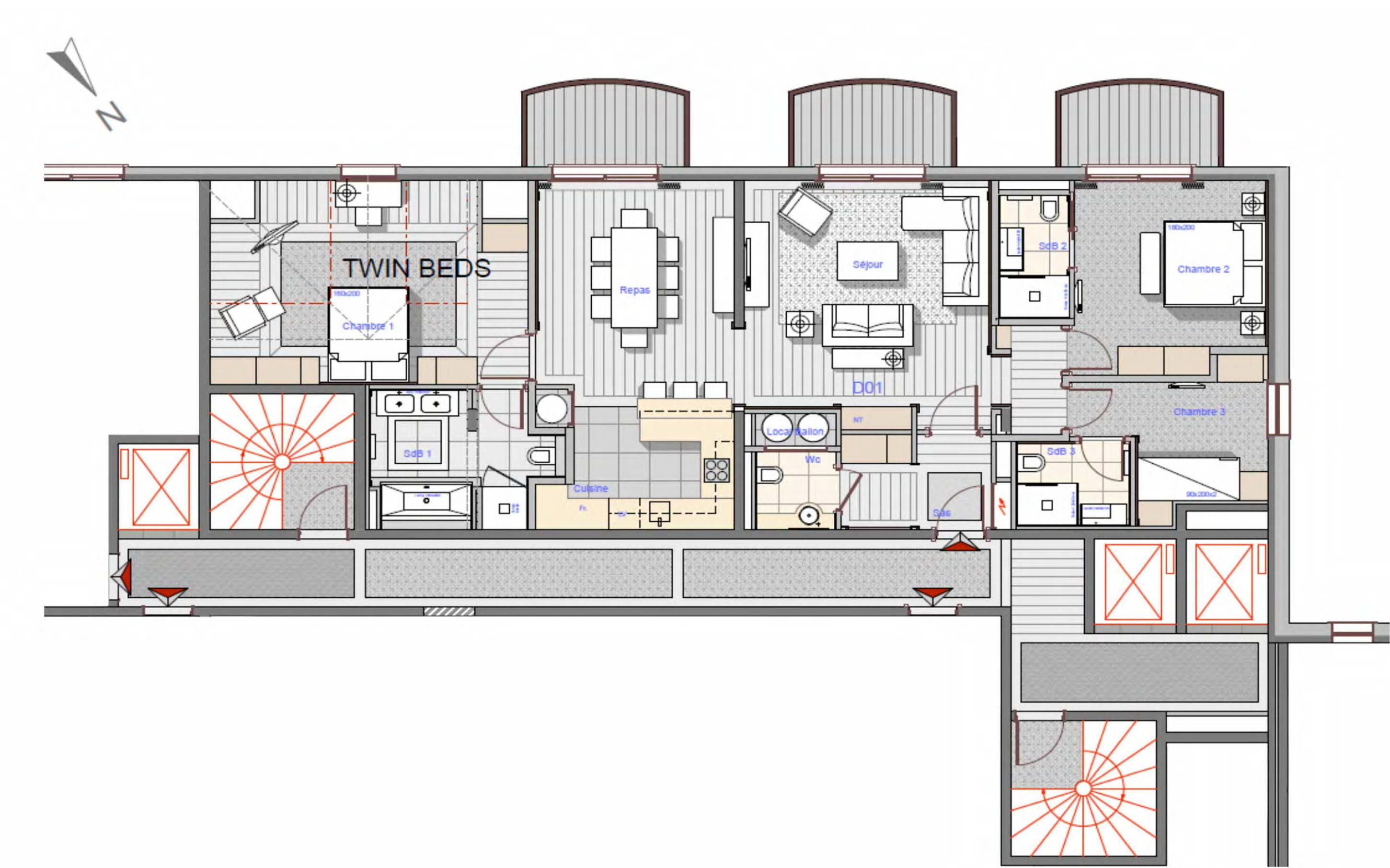
One apartment of 1,313 square feet
(122 square meters) in Block D.

Amenities include:

- Naturalmat organic mattresses
- The Organic Pharmacy bathroom amenities
- Flat-panel TV
iPad integrated music system
- Fully equipped kitchen
- Unlimited in-room wireless internet access



D01 – 3 Bedrooms



FOOD & BEVERAGE

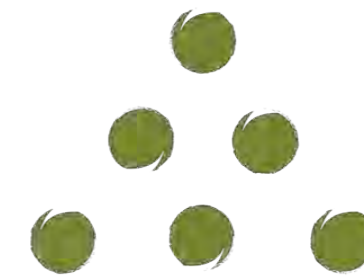
Club Lounge

The Club Lounge, designed by Morpheus London, measures 1,900 square feet (175 square meters). The beautifully designed communal space with stone-clad fireplace provides guests and residents a welcome venue to enjoy breakfast, afternoon tea and evening appetizers and cocktails. A dedicated workspace is also available with unlimited WiFi.

In-Room Dining

Dine in privacy and comfort. From breakfast through to late evening, classic dishes are prepared in the traditional manner or with the healthy option - The choice is yours. Private chefs can be arranged.





SIX SENSES SPA

COURCHEVEL

Six Senses Spa Courchevel offers residents, guests and non-guests a welcome respite after a hard day's skiing. It comprises an open-plan reception and lounge area designed in the style of a concept store. A manicure and pedicure station and a juice bar is seamlessly incorporated into this open space so guests can enjoy a complete hand and foot pampering and a good conversation over a healthy drink.

The spa also feature:

- Five treatment rooms
- An indoor swimming pool
- Wet facilities including saunas, steam and Kneipp path
- A gym
- Outdoor Hot tub
- Beautifully crafted retail shelves feature skincare products, clothing and fashion accessories



ACTIVITIES

Courchevel, boasting some of the best skiing and snowboarding in the world, is situated in the largest linked ski area anywhere. The freshly groomed pistes, or ski runs, are the envy of all other resorts. The breathtaking views across to Mt Blanc, guaranteed snow and the endless pistes are the reason why this is the jewel of Alpine skiing.





SIX SENSES SKI CONCIERGE

This service incorporates our ski lodge situated at La Croisette where all ski school meeting points are and from where the ski lifts start. Fully equipped with heated boot racks, it is just next to the boutiques and bars for après ski. From the moment you arrive to the moment you depart you never need lift a finger where your equipment is concerned. The concierge team will take your equipment from you upon arrival, and servicing can be arranged overnight, and all is ready for you each morning at the lodge. A ski technician is on hand to make any last minute adjustments. The Lodge is Ski in Ski out and a five-minute walk from the Residences or two minutes by shuttle.







SIX SENSES CONCIERGE

The Residences are supported by Six Senses Concierge team dedicated to offering an extensive range of services including 24/7 concierge, in-resort shuttle services, private catering, events, activities, ski instructors, child care, dining reservations, private boutique viewing and bespoke transport solutions.



APARTMENT RATES

BAR Rate						Low		Shoulder		Peak		High	
						Period :	01.12.18 to 14.12.18 31.03.19 to 30.04.19	Period:	15.12 18 to 25.12.18 09.03.19 to 30.03.19	Period:	26.12.18 to 06.01.19 09.02.19 to 08.03.19	Period:	07.01.19 to 08.02.19
Category	Block/Unit No.	Size Sq.m.	Sleeps	No. of units	Rate based on		Rate 18/19		Rate 18/19		Rate 18/19		Rate 18/19
Two-Bedroom Apartment	C1, C2, C11, E5, 7, 11, 12, 13	67 to 86	4	8	4		1,350		1,750		2,700		2,350
Three-Bedroom Family Apartment	B11, E1, 2, 3, 4, 8, 9, 10	73 to 90	6	8	6		1,650		2,200		3,450		3,000
Three-Bedroom Prestige Family Apartment	B08	109	6	1	6		1,750		2,350		3,650		3,200
Three-Bedroom Prestige Family Apartment	D01	122	5	1	5		1,750		2,350		3,650		3,200
Three-Bedroom Prestige Family Apartment	B01	98	6	1	6		1,650		2,250		3,550		3,100
Three-Bedroom Prestige Apartment	C12	129	6	1	6		1,860		2,450		3,750		3,300
Four-Bedroom Prestige Apartment	C03	141	7	1	7		2,000		2,650		4,150		3,600

Rates are inclusive of:
TVA
Continental Breakfast Buffet

Rates shown in Euro.

Rates are inclusive of: 10 percent VAT, continental breakfast buffet, concierge services, ski concierge, complimentary shuttle service in Courchevel 1850 from 9 am to 9:30 pm for skiing, shopping and restaurants, daily housekeeping service, access to spa, access to Club Lounge, transfer to/from Courchevel Altiport, Wi-Fi Access.

Local bed tax (Taxe de Sejour) to be paid upon departure, EUR 2.48 per person per night from 18 years old.

Transfer rates: Private airport transfers to/from Geneva, Lyon and Chambéry International Airport from EUR 450 per way per car. Maximum number of seven guests per Mercedes Viano.







SIX SENSES
HOTELS RESORTS SPAS